

Point Blue 2012 CLRA Survey Results at Faber Marsh

Clapper Rail Calling Locations

- 1 Round 1
- 2 Round 2
- 3 Round 3
- 4 Round 4
- 5 Round 5

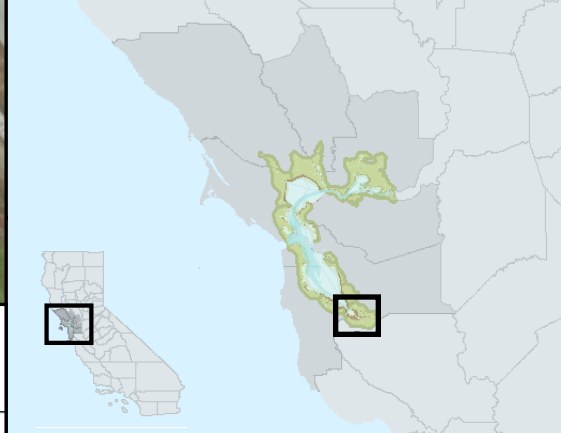
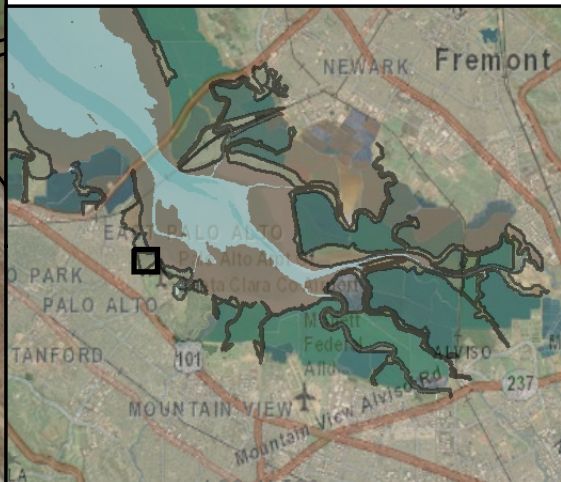
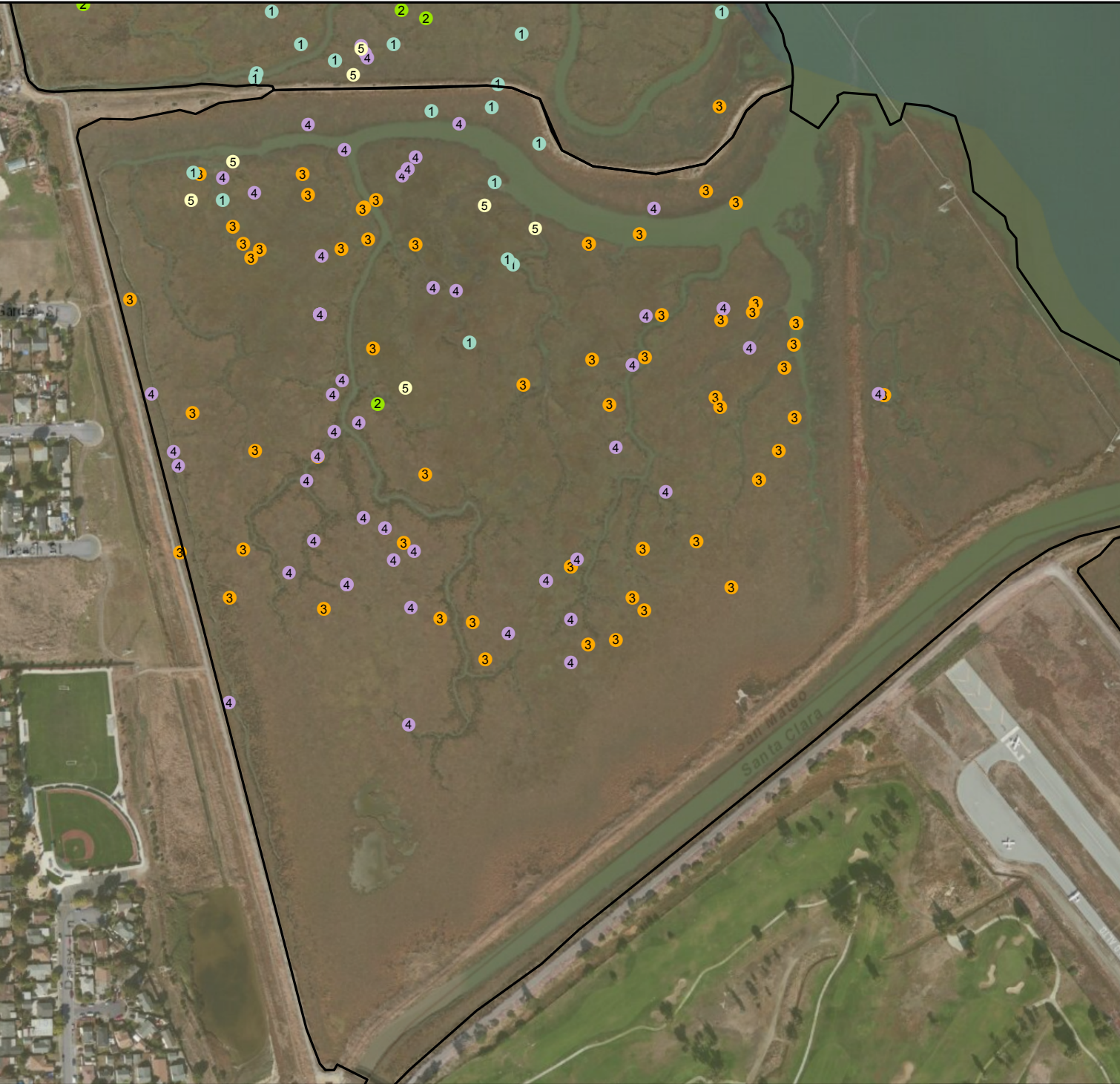
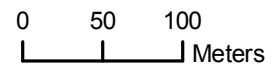
⊠ Survey Station

⬭ Site Boundary



Background: World Imagery (ESRI)

Map produced on 3/13/2014



2012 Clapper Surveys Results at Faber Marsh
Surveys conducted by Point Blue and entered into GIS by the Invasive Spartina Project

